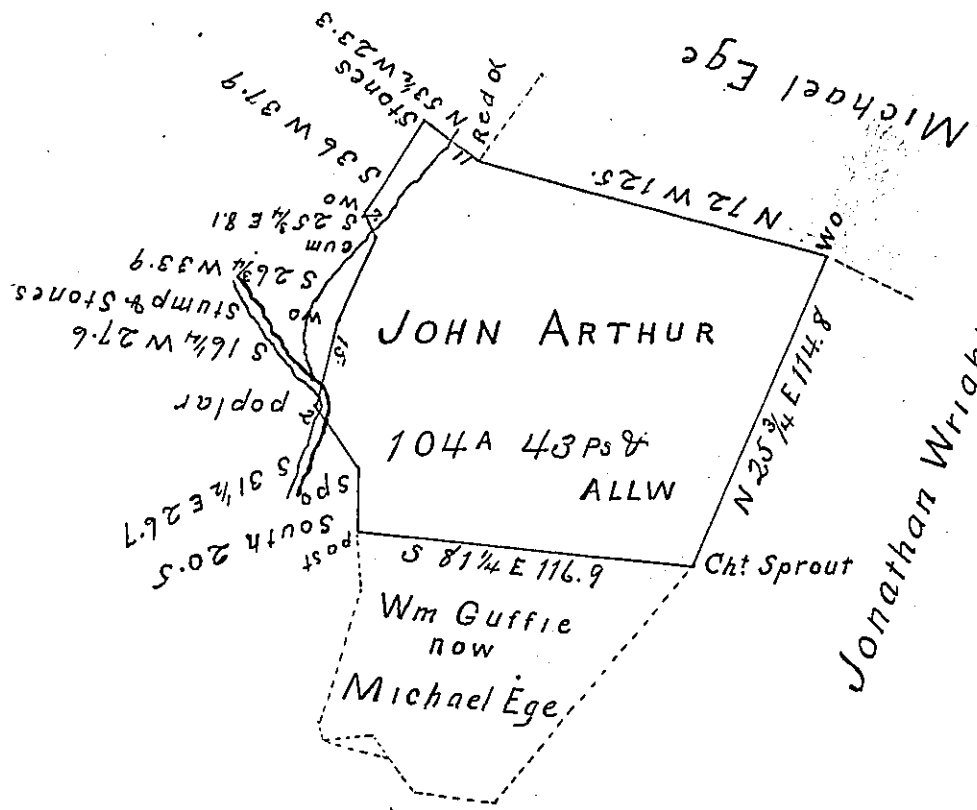


George Hartzell



Situate in Manallen Township Adams County
 Surveyed Nov. 1796 by Moses McClean D.S. In
 pursuance of a warrant granted to John Arthur
 for 100^a, dated January 19th 1793 Resurveyed
 Nov. 6th 1812 for the Pine Grove Company Contain-
 ing one hundred and four acres forty three perches
 & allw

By Saml Sloan D.S.

To Andrew Porter Esq.
 Surveyor General.

IN TESTIMONY that the above is a copy of the original remaining on file in
 the Department of Internal Affairs of Pennsylvania, made
 conformably to an Act of Assembly approved the 16th day of
 February, 1833, I have hereunto set my Hand and caused
 the Seal of said Department to be affixed at Harrisburg,
 this fourth day of August 1903.

Grace P. Brown
 Secretary of Internal Affairs.